

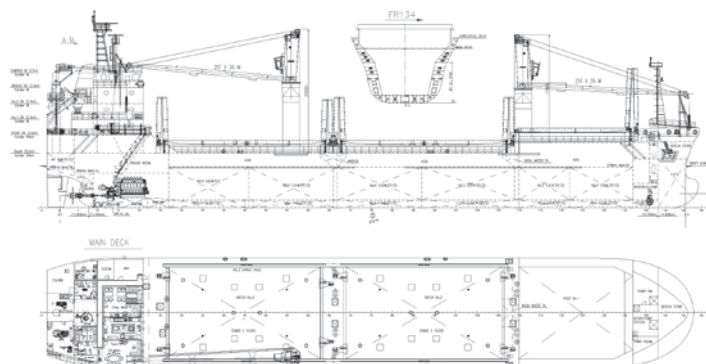
M/V CDRY Black

Technical Specifications



GENERALS

Builders	Jangsu Yangzijiang Shipbuilding - China
Delivery	2011
Type	Multipurpose Singledecker
Classification	RINA AUT - UMS; ICE CLASS 1C
Call sign:	-
IMO Number:	9504633
Flag	Italy
Homeport	Napoli
Special Features	Strengthened for heavy cargoes, equipped for carriage of dangerous goods according Solas II-2



DIMENSIONS AND MAIN DATA

Length Overall	108,20 M
Length Between PP.	103,90 M
Breadth Moulded	18,20 M
Depth to Main Deck	9,00 M
Draft Summer	7,00 M
Deadweight Summer	8.050 MT
TPC	17,73 T/cm
GT/NT	5.630 / 2.877
Max Air Draft	31,35 M

SPEED/CONSUMPTION

At Sea	ABT. 12 KN ON	ABT. 12 MT HFO 180 per Day
In Port without Gear	1,0 MT MGO per Day	
In Port with Gear	3,0 MT MGO per Day	
Boiler fuel consumption in Port	1,0 MT MGO per Day	

Consumption data assumes shaft generator disconnected.
Vessel is burning fuels according to ISO 8217-1996

TANK CAPACITIES

HFO	425 M ₃
MGO	65 M ₃
Freshwater	84 M ₃
Ballastwater	2.512 M ₃

HOLDS/HATCHES

N. of Holds/Hatches	3 / 3
Hold 1	18,90 x 15,20 x 11,00 M
Hold 2	29,40 x 15,20 x 9,00 M
Hold 3	27,30 x 15,20 x 9,00 M
Hatch 1	17,50x15,20 M
Hatch 2	25,90x15,20 M
Hatch 3	25,90x15,20 M
Hold Format	Hold 1 is narrowing in fore Part to 6,40 M Hold 2 is fully boxshaped Hold 3 is narrowing in aft Part to 8,00 M
Hatches/Opening system	Steel Folding hatch covers with integrated hydraulic opening system - TTS HUA HAI
Tank Top	15,00 MT/SQM

Capacity	Hold 1	Hold 2	Hold 3	Total
Grain/Bale	2.710 CBM / 95.750 CBFT	3.900 CBM / 137.750 CBFT	3.638 CBM / 128.500 CBFT	10.248 CBM 364.000 CBFT

GEAR

Type	2 MAC GREGOR Cranes
SWL	MAX. 25 MT
Situated	Starboardside

MACHINERY

Main Engine	MAK Diesel, Type 6M32C - 3.000 KW at 600 RPM
Auxiliary Engine	2X Lindenberg Diesel Generator - Output: 365 KW at 1.800 RPM
Emergency Engine	1X Lindenberg Diesel Generator - Output: 265 KW at 1.800 RPM
Shaft Generator	450 KW / 1800 RPM
Bow Thruster	350 KW / 1.500 RPM
Freshwater Generator	10 MT per Day
Propeller	Controllable Pitch Propeller

M/V CDRY White

POCKET PLAN

